

# TUNGSTEN AND ODS STEEL BEHAVIOR AT HIGH INTENSITY, $10^{15}$ W/cm<sup>2</sup>, LASER IRRADIATION IN AIR AND VACUUM AMBIENCE: COMPARATIVE STUDY

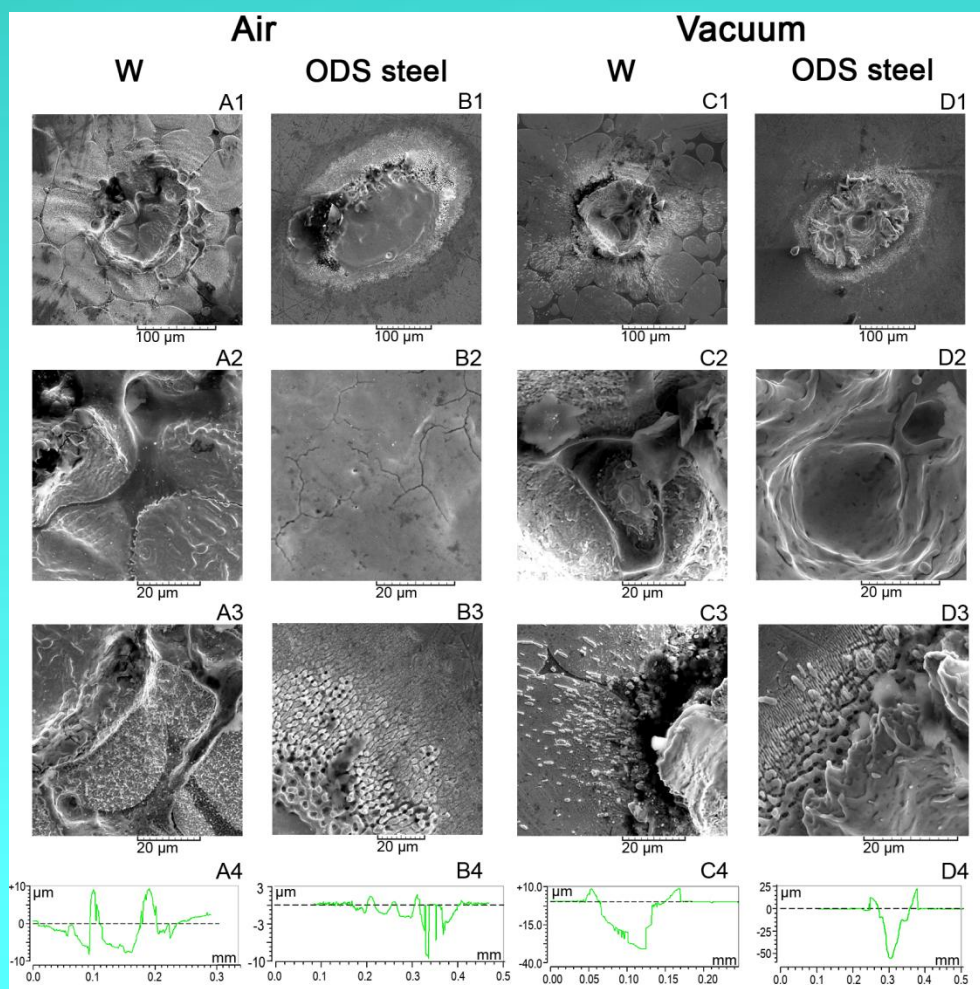
M. TRTICA<sup>1</sup>, J. STASIC<sup>1</sup>, J. LIMPOUCH<sup>2</sup>, P. GAVRILOV<sup>2</sup>

<sup>1</sup>VINCA Institute of Nuclear Sciences - National Institute of the Republic of Serbia,  
University of Belgrade, Republic of Serbia. E-mail: [etrtica@vinca.rs](mailto:etrtica@vinca.rs)

<sup>2</sup>Faculty of Nuclear Sciences and Physical Engineering, Czech Technical University in Prague, Czech Republic

**Abstract.** The effects of high intensity,  $10^{15}$  W/cm<sup>2</sup>, laser radiation on tungsten (W) and oxide dispersion-strengthened (ODS) steel in ambiances of air and vacuum were studied. In both samples and mediums high intensity laser radiation induced morphological and chemical variations. Surface features and phenomena depend on the material characteristics and the ambience applied. Thus, crater depth was larger in vacuum than in air for ODS steel sample -  $\sim 55$   $\mu\text{m}$  vs.  $\sim 9$   $\mu\text{m}$ . Irradiation was accompanied with the appearance of plasma which can emit X-ray radiation. Chemical surface changes, particularly oxidation, were registered as well.

**W and ODS steel** have extraordinary characteristics attractive for various applications, including **nuclear complex**. In inertial fusion (IF) reactor both metals are serious candidates for the **First Wall Materials** (FWM). FWMs are exposed to various fluxes like electromagnetic and thermal, thus the action of high intensity laser radiation can, in one approximation, simulate behavior of these materials inside the reactor.



Laser pulse energy of  $\sim 5.2$  mJ, intensity  $10^{15}$  W/cm<sup>2</sup> (100 pulses), induced distinguishing surface features and phenomena. Generally, they are in strong correlation with sample type and ambience:

- (i) in both targets **crater like damages** were registered with crater depth larger in ODS steel,  $\sim 55$   $\mu\text{m}$ , vs.  $\sim 33$   $\mu\text{m}$  for W in vacuum. Also, damages were always more prominent in vacuum. In the peripheral area specific changes were registered such as hydrodynamic (**HD**) effects, laser-induced periodic surface structures (**LIPSS**);
- (ii) irradiation was accompanied with the appearance of **plasma** which can emit x-ray radiation;
- (iii) **chemical surface changes**, particularly oxidation, were registered in air as well as in vacuum but only in ODS steel.

The results could contribute to better understanding of the behavior of nuclear reactor materials under high fluxes that can be simulated by laser intensities applied here.

**Acknowledgements:** (i) MESTD of the Republic of Serbia, project 172019; (ii) IAEA project "Pathways to energy from inertial fusion: Materials beyond ignition"; (iii) ESIF and the Czech Republic, the Project Center of Adv. Appl. Sci. [CZ.02.1.01/0.0/0.0/16\_019/0000778] - through The Operational Program Res., Develop. and Educat., and (iv) Czech Ministry of Educat., Youth and Sports [project LTT17015].